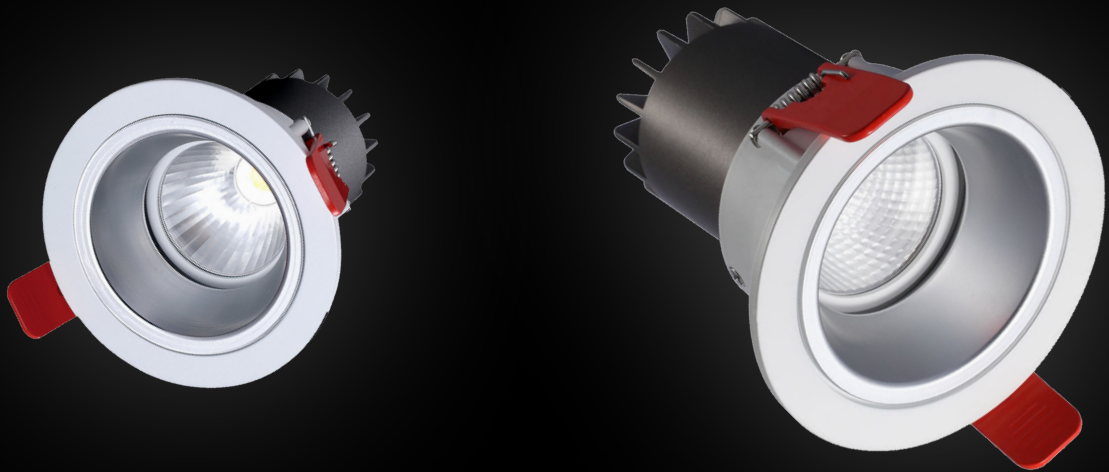


LED.CO.UK

THE MAIA RANGE



ABOUT US

LED.CO.UK is an International supplier of LED lighting technology. We specialise in complete energy efficient lighting solutions for both new and retrofit applications. We provide the highest quality LED based products by integrating premium components to ensure reliability and optimum performance.

Our service delivers a full bespoke package from site surveys, lighting design, the provision of leading edge technology and installation.

THE MAIA RANGE

At LED.CO.UK we provide a comprehensive range of lighting options for all your commercial applications each tailored to meet the operating and design parameters required.

Lighting design services are available to ensure designs meet BS EN 12464-1:2011, and Society of Light and Lighting: Code for Lighting 2012. We can also provide a cost of ownership analysis to illustrate savings which can be made versus conventional lighting.

From first point of contact to final sign off we aim to support our customers through the complete process so all details are fully dealt with to maximise performance. Within this brochure we have included our complete Maia Range of LED Downlights. To view our full range of LED products please visit www.led.co.uk.

MAIA MINI

- CREE LED Engine
- Cast Aluminium
- Instant on - no flicker
- Environmentally Friendly - No mercury or lead enters the environment
- No RF and electronic magnetic interference
- Over 50,000 hours life span



The Maia Mini LED is a 90mm diameter downlight which uses a CREE LED engine. The heatsink is constructed from die-cast aluminium complete with aluminium bezel and reflector. The bezel features a 40mm recess detail which can be finished in gold, silver or chrome effect.

The Maia is available in a 600lm and 700lm output with 15°, 24° and 36° beam angle options.

	MAI-M	-XX	-X	-XX	-XX-XX	-X-X	-X	
		↑	↑	↑	↑	↑	↑	
Wattage		08						
8 W								
10 W	10							
Colour								
White	W							
Special RAL Colour	S							
Colour Temperature								
3000K (Warm White)	3K							
4000K (Neutral White)	4K							
5000K (Cool White)	5K							
Beam Angle								
15° Beam	15							
24° Beam	24							
36° Beam	36							
Lens								
Clear	CR							
Body								
Adjustable	A							
Dimming								
Fixed output	0							
1-10V Dimming	1							
DALI Dimming	2							
Mains Dimming	3							
Switch Dimming	4							
Emergency								
Not Required	0							
3 Hour Facility	1							
3 Hour Emergency Self Test	2							
3 Hour Emergency Central Test	3							

Example of Code:	
MAI-M-08-W-3K-36-CR-A-0-0	
Wattage:	8 W
Colour:	White
Colour Temp.:	3000K
Beam Angle:	36°
Lens:	Clear
Body:	Adjustable
Dimming:	Fixed output
Emergency:	Not Required



Maia Mini		
Power	8 W	10 W
Dimensions	Ø90 x 93mm	Cutout: Ø80mm
Weight	0.7 kg	
Installation	Ceiling Tile/ Plasterboard	
Voltage	220-240Vac	100-240Vac

Performance		
Power	8 W	10 W
Exit Lumens (lm)	569 lm	687 lm
Efficiency	69.4 lm/cW	67.4 lm/cW
Beam Angle	15° / 24° / 36°	
Colour Rendering	Ra>82	
Colour Temperature	3000K / 4000K / 5000K	
Dimming	1-10V / DALI	
Operating Temp.	-40°C to 50°C	
Emergency	3 Hour Facility 3 Hour Emergency Self Test 3 Hour Emergency Central Test	
Warranty	5 Years	

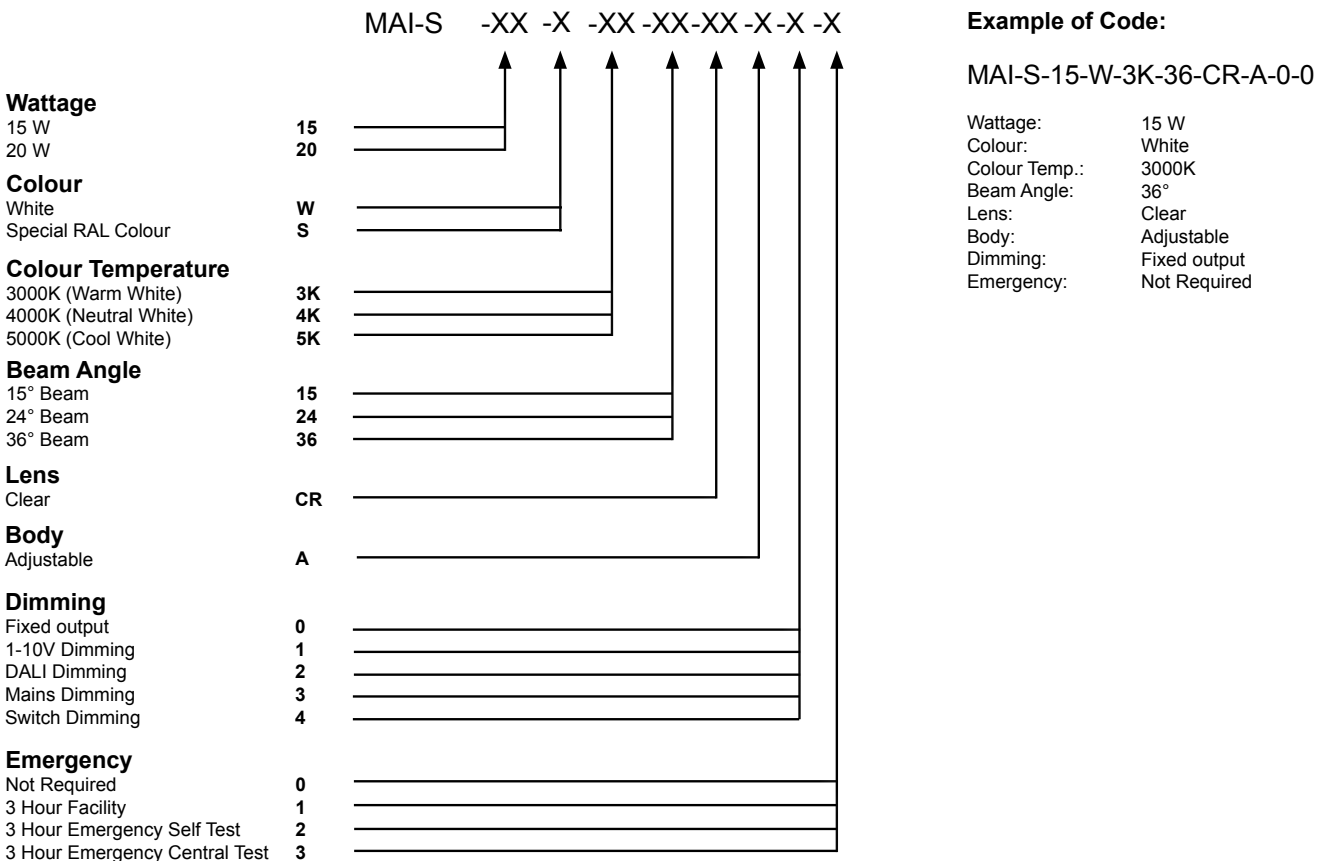
MAIA

- CREE LED Engine
- Cast Aluminium
- Instant on - no flicker
- Environmentally Friendly - No mercury or lead enters the environment
- No RF and electronic magnetic interference
- Over 50,000 hours life span



The Maia LED is a 130mm diameter downlight which uses a CREE LED engine. The heatsink is constructed from die-cast aluminium complete with aluminium bezel and reflector. The bezel features a 40mm recess detail which can be finished in gold, silver or chrome effect.

The Maia is available in an 850lm and 1300lm outputs with 15°, 24° and 36° beam angle options.





Maia		
Power	15 W	20 W
Dimensions	Ø130 x 110mm	Cutout: Ø105mm
Weight	0.9 kg	
Installation	Ceiling Tile/ Plasterboard	
Voltage	220-240Vac	100-240Vac

Performance		
Power	15 W	20 W
Exit Lumens (lm)	1,146 lm	1,565 lm
Efficiency	75.4 lm/cW	77.9 lm/cW
Beam Angle	15° / 24° / 36°	
Colour Rendering	Ra>82	
Colour Temperature	3000K / 4000K / 5000K	
Dimming	1-10V / DALI	
Operating Temp.	-40°C to 50°C	
Emergency	3 Hour Facility 3 Hour Emergency Self Test 3 Hour Emergency Central Test	
Warranty	5 Years	

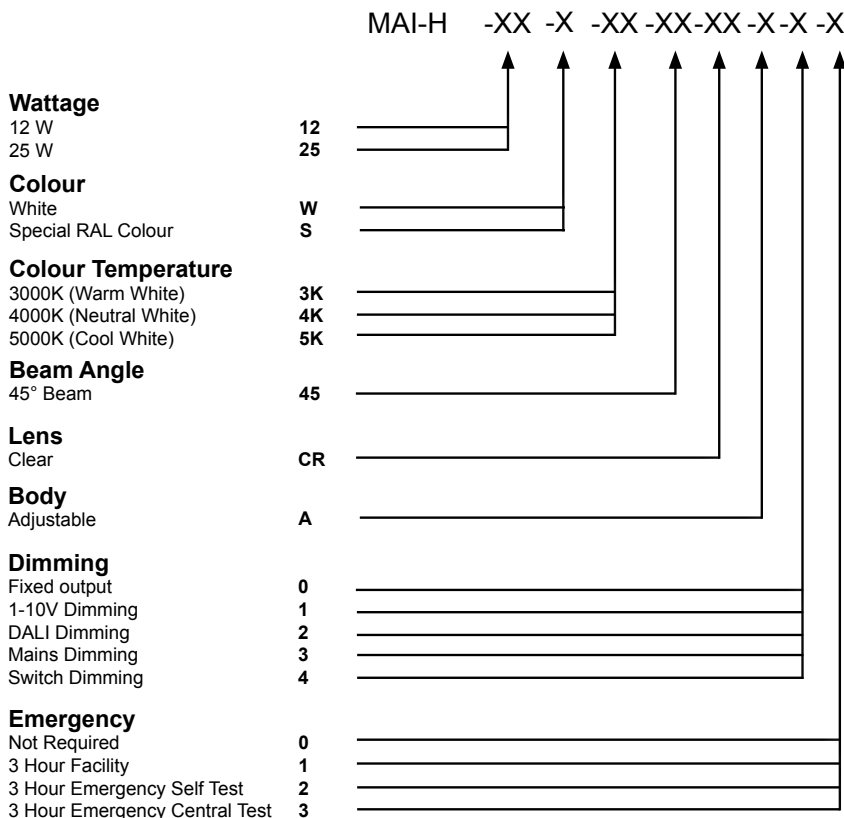
MAIA HIGH OUTPUT

- Citizen COB LED Engine
- Cast Aluminium
- Instant on - no flicker
- Environmentally Friendly - No mercury or lead enters the environment
- No RF and electronic magnetic interference
- Over 50,000 hours life span



The Maia High Output LED is a 130mm diameter downlight which uses a Citizen COB LED engine. The heatsink is constructed from die-cast aluminium complete with aluminium bezel and reflector. The bezel features a 40mm recess detail which can be finished in gold, silver or chrome effect.

The Maia High Output is available in an 1,140 lm and 2,375 lm outputs with a 45° beam angle.



Example of Code:

MAI-H-25-W-3K-45-CR-A-0-0

Wattage:	25 W
Colour:	White
Colour Temp.:	3000K
Beam Angle:	45°
Lens:	Clear
Body:	Adjustable
Dimming:	Fixed output
Emergency:	Not Required



Maia		
Power	12 W	25 W
Dimensions	Ø130 x 110mm	Cutout: Ø105mm
Weight	0.9 kg	
Installation	Ceiling Tile/ Plasterboard	
Voltage	220-240Vac	100-240Vac

Performance		
Power	12 W	25 W
Exit Lumens (lm)	1,140 lm	2,375 lm
Efficiency	95 ll/cW	
Beam Angle	45°	
Colour Rendering	Ra>82	
Colour Temperature	3000K / 4000K / 5000K	
Dimming	1-10V / DALI	
Operating Temp.	-40°C to 50°C	
Emergency	3 Hour Facility 3 Hour Emergency Self Test 3 Hour Emergency Central Test	
Warranty	5 Years	

sales@led.co.uk
www.led.co.uk

LED.CO.UK